



Pre-Operative Information: Caudectomy (Screw Tail Surgery)

Price: £1,750 (including VAT @ 20%)

Corkscrew tail, also known as screw tail or ingrown tail, is a vertebral malformation that commonly occurs in certain dog breeds. In this condition, vertebrae may be fused together or otherwise abnormally structured, leading to the tail taking on an abnormal shape and curvature. Affected dogs typically have a deep skin fold surrounding a tightly curled, malformed tail. This deep skin fold is predisposed to developing skin infections, which can become severe and negatively impact the dog's quality of life. In some cases, the tail anatomy is so deformed that it limits the dog's ability to pass faeces normally, forcing faeces to also accumulate in the skin fold surrounding the tail.

Corkscrew tail is commonly observed in English Bulldogs, Pugs, Boston Terriers, and French Bulldogs, although it may also occur in other breeds.

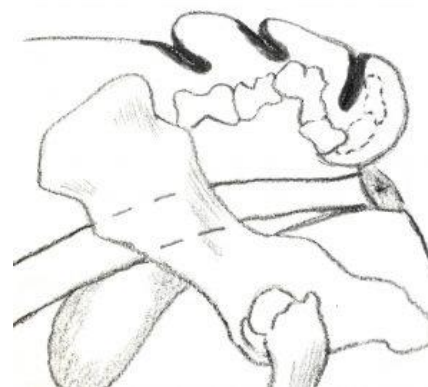
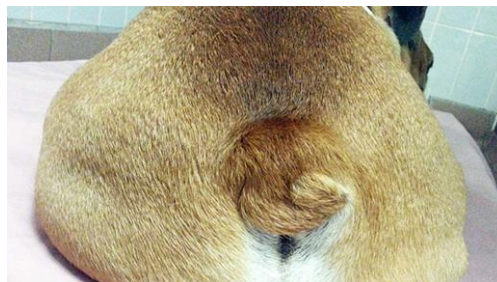
Screw Tail Clinical Signs

The most common sign of corkscrew tail is the presence of recurrent infections in the tail fold. Dogs with a tail fold infection may have severe itching and discomfort around the tail, leading them to chew at their tail and drag their hind end on the ground. Additionally, you may notice a foul odour coming from the skin around the tail. This odour may be related to a bacterial skin infection, or it may be caused by faeces that has become trapped within the skin folds. If your dog belongs to a breed that is predisposed to corkscrew tail and you notice signs of a tail fold infection, there is a high likelihood that your dog has corkscrew tail that is contributing to this skin condition.

Screw Tail Diagnosis

Corkscrew tail can be diagnosed on the basis of a physical examination. Your veterinarian will examine your dog's back end, looking for the characteristic tail malformation and deep skin folds that are diagnostic for corkscrew or 'screw tail'.

In some cases, your veterinarian may recommend radiographs (x-rays) to better characterize the vertebral anatomy of your dog's tail. Your veterinarian may recommend diagnostic tests for your dog's tail fold infection. Bacterial culture and sensitivity testing, for example, can help determine which bacterial species are causing the infection and which antibiotics will be most effective to treat them.



Screw Tail Treatment

There are two options for the treatment of corkscrew tail: **medical management** and **surgical correction**. Medical management typically requires a lifelong commitment to care, while surgical correction, although more invasive, is often curative.

For medical management, the goal is to adhere to a cleaning regimen that will help keep skin infections at bay. In most cases, this requires regular cleaning of the tail fold with antibacterial shampoos, wipes, or antiseptic solutions. Many dogs require cleaning after every bowel movement, to prevent faeces from being trapped within the skin folds. Even with regular cleaning, however, your dog will likely still develop periodic skin infections, which must be treated with antibiotics and anti-inflammatory medication. Regular cleaning is intended to decrease the frequency of tail fold infections, but it is unlikely to completely prevent them.

Screw Tail Surgery (Caudectomy)

In most cases, the treatment of choice is surgical correction. Under general anaesthesia, your veterinarian will surgically remove some or all of the tail vertebrae. Doing so alleviates obstruction of the anus and reduces the presence of skin folds around the hind end, reducing the likelihood of infection. Your veterinarian will provide you with detailed instructions regarding the best surgical approach for your dog and your dog's anticipated recovery. Following post-operative instructions carefully is essential in order to ensure that the procedure is as successful as possible.

All patients will receive pain medications to reduce their post-operative discomfort. Dietary modification with a high fibre diet, coupled with stool softeners are used to help with reducing the pain and straining associated with defecation. In addition, they help to reduce the potential for breakdown of the repaired tissue. Your pet should be kept calm and quiet for the first two weeks after surgery to allow for tissue healing. A collar is necessary to prevent the patient interfering with the surgical site. Cold compresses applied to the surgical site help diminish swelling and perineal irritation.

For more information or to discuss this surgery in more detail with one of our veterinary surgeons please contact us on 015394 88555 or visit the referrals section of our website at www.oakhillvetgroup.co.uk

What is included?

At Oakhill Vets we strive to ensure our surgeries are 'all inclusive' and so this surgery **INCLUDES** the following:

- Pre-anaesthetic blood screen (as required)
- Hospitalisation (up to 24 hours)
- Intravenous fluids during the anaesthetic and surgery
- General Anaesthesia
- Surgery
- Post-operative medication (for up to two weeks)
- 24-hour post-operative laser / cold-pack treatment / physiotherapy as required, under the guidance of our Animal Rehabilitation Centre (ARC) staff

What is not included?

Post-operative complications are not common but are possible. While we endeavour to give you an up-front, all-inclusive estimate, when it comes to pets recovering from surgery there is

unfortunately, an element of unpredictability! Complications, which may incur additional costs include (but are not limited to):

- Self-trauma by pet to surgical site
- Post-operative wound infection

Payment Options

Payment is expected in full at the time of consultation or upon discharge from Oakhill Vets. If your pet is insured, we would request that you pay for their treatment and claim the funds back from your insurance company. Once you have settled the cost of any treatment we can help you complete your insurance claim form(s) at no additional charge. Direct claims may be arranged with some insurance companies and are subject to a check with our referral coordinators prior to your appointment. An administration fee is chargeable each time a direct claim is carried out by our referral coordinators. If you have any concerns about payment, then please contact us prior to your consultation.

Why choose Oakhill Veterinary Referrals?

Oakhill Vets is based in Windermere in the beautiful Lake District. We are happy to take referrals from clients further afield. Let our friendly, highly skilled and experienced team of Veterinary Surgeons and Registered Veterinary Nurses look after your pet while you relax and enjoy a short break in The Lakes. For more details, please phone the practice and speak to one of our helpful referral coordinators on 015394 88555.