

Information: Referral for Oral Tumour Excision

Price: From £1276 (including VAT, February 2025)

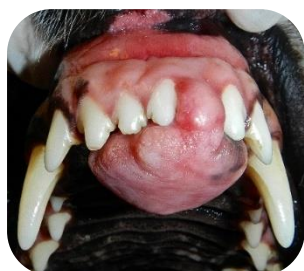


Fig. 1. Peripheral Odontogenic Fibroma (POF)

An 'Eplulis' is an old term that vets use for a lump on the gum. The word means 'growth on the gingiva', which describes where it is, but not what its nature is. The nature of 'epuli' vary between inflammatory lesions, hyperplastic lesions, and tumours (both malignant and benign). This is why a biopsy, often before attempting full removal, is recommended. If the lump is cut off at the base, potentially not all the affected tissue will have been removed and the lump may grow back.

Peripheral Odontogenic Fibroma (POF) is one of the most common benign oral tumours in dogs. They originate from the periodontal ligament tissue, which is what holds the tooth in place. Without removing all this tissue, the mass will grow back, and can sometimes get to a very large size, making it difficult for the dog to eat (see fig.1).

To fully remove these tumours, the tooth (or sometimes teeth) next to the mass, along with some amount of bone, needs to be removed to prevent it re-growing. Depending on where the tumour is in the mouth, the surgery can be challenging.

At Oakhill, we are happy to take cases for tumour removal, where a biopsy and histology has already confirmed the diagnosis. We are also happy to take on cases that have an oral mass and require an initial biopsy, however please contact us first as there is no 'one size fits all'.

For more information or to discuss this surgery in more detail with our dental veterinary surgeon, please contact us at the practice on 015394 88555 or visit the referrals section of our website at www.oakhillvetgroup.co.uk

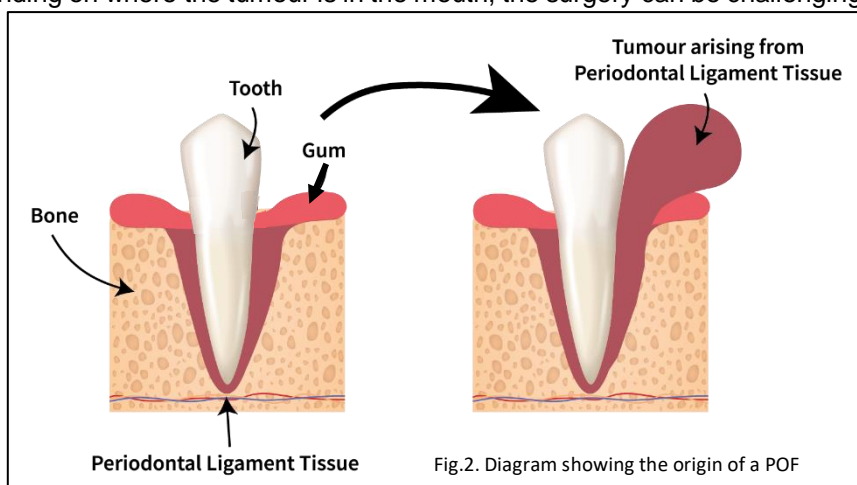


Fig.2. Diagram showing the origin of a POF

What is included?

At Oakhill Vets we strive to ensure our surgeries are 'all inclusive' and so this surgery INCLUDES the following:

- Referral consultation
- Pre-anaesthetic blood screen
- Hospitalisation (up to two nights total in the 24-hour pre/post-op period)
- Intravenous fluids during the anaesthetic and surgery
- General Anaesthesia
- Thorough oral assessment
- Dental x-rays
- Surgery to remove the tumour
- Histology of the tumour (to confirm the diagnosis and margins)
- Post-operative medication (for up to two weeks)
- Post-operative examinations for 2 follow-up appointments

Complications and what is not included?

Post-operative complications are not common but are possible. While we endeavour to give you an up-front, all-inclusive estimate, when it comes to pets recovering from surgery there is unfortunately an element of unpredictability. Complications, which may incur additional costs include (but are not limited to):

- Tooth root fracture
- Post-operative wound breakdown
- Delayed haemorrhage
- Jaw fracture
- Nerve damage
- Tumour-specific complications

Payment Options

Payment is expected in full at the time of consultation or upon discharge from Oakhill Vets. If your pet is insured, we would request that you pay for their treatment and claim the funds back from your insurance company. Once you have settled the cost of any treatment, we can help you complete your insurance claim form(s) at no additional charge. Direct claims may be arranged with some insurance companies and are subject to a check with our referral coordinators prior to your appointment. An administration fee is chargeable each time a direct claim is carried out by our referral coordinators.

Most insurance companies have exclusions for routine dental treatment; however, many dental conditions have an underlying cause which may be claimable. Examples of these are: Immune-mediated disease such as FCGS and CCUS, accidental injury (e.g. fractures), odontoclastic resorptive lesions (sometimes called tooth resorption or FORLs), **tumours**, dentigerous cysts and persistent deciduous teeth. Always check with your insurance provider regarding what dental cover they provide.

If you have any questions about payment, then please contact us prior to your consultation.

Why choose Oakhill Veterinary Referrals?

Oakhill Vets is based in Windermere in the beautiful Lake District. We are happy to take referrals from clients further afield. Let our friendly, highly skilled and experienced team of Veterinary Surgeons and Registered Veterinary Nurses look after your pet while you relax and enjoy a short break in The Lakes. For more details, please phone the practice and speak to one of our helpful referral coordinators on 015394 88555.